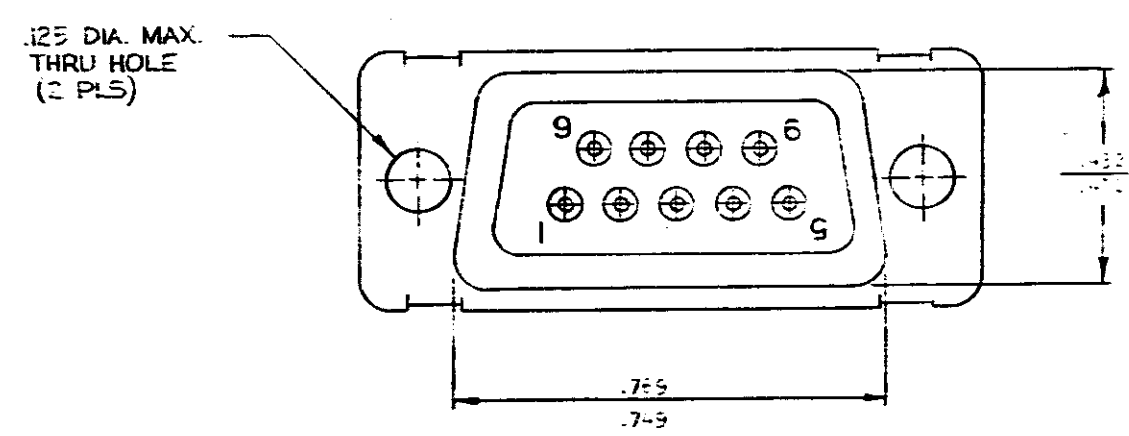
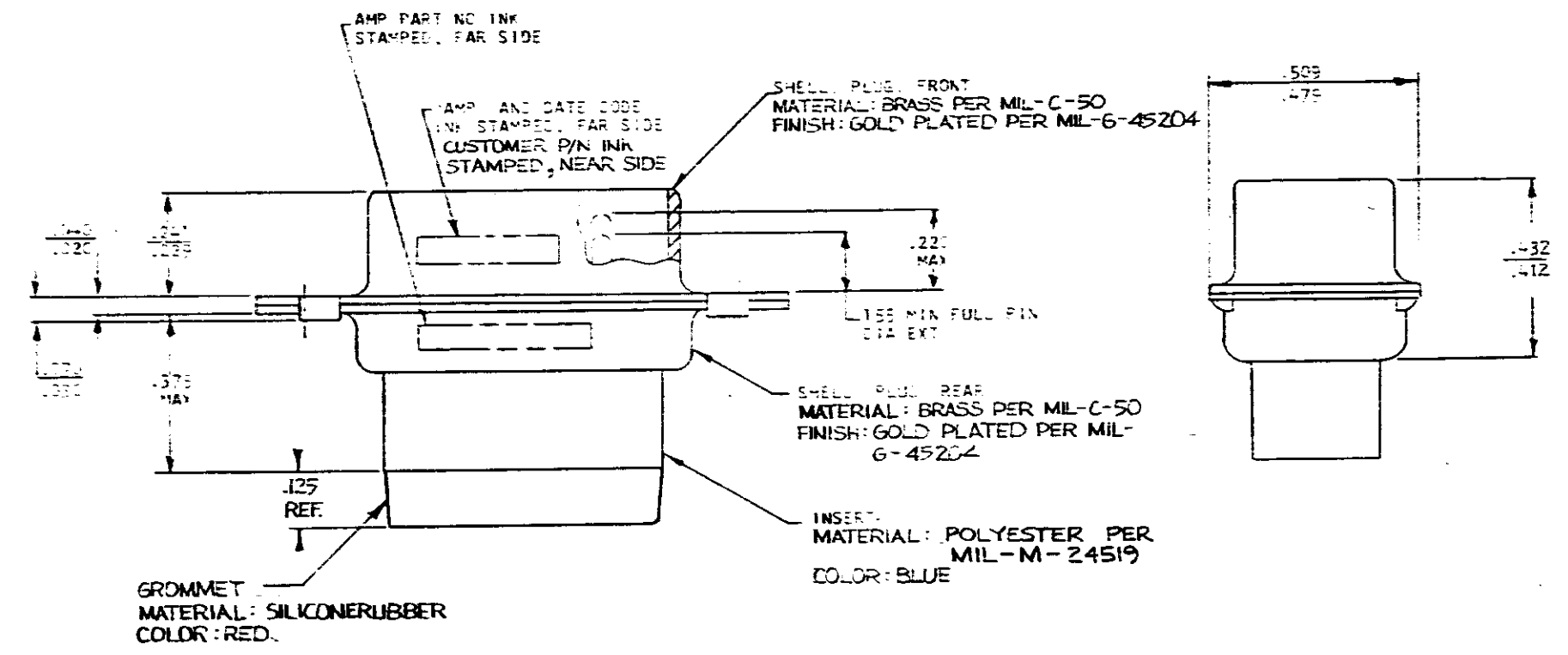
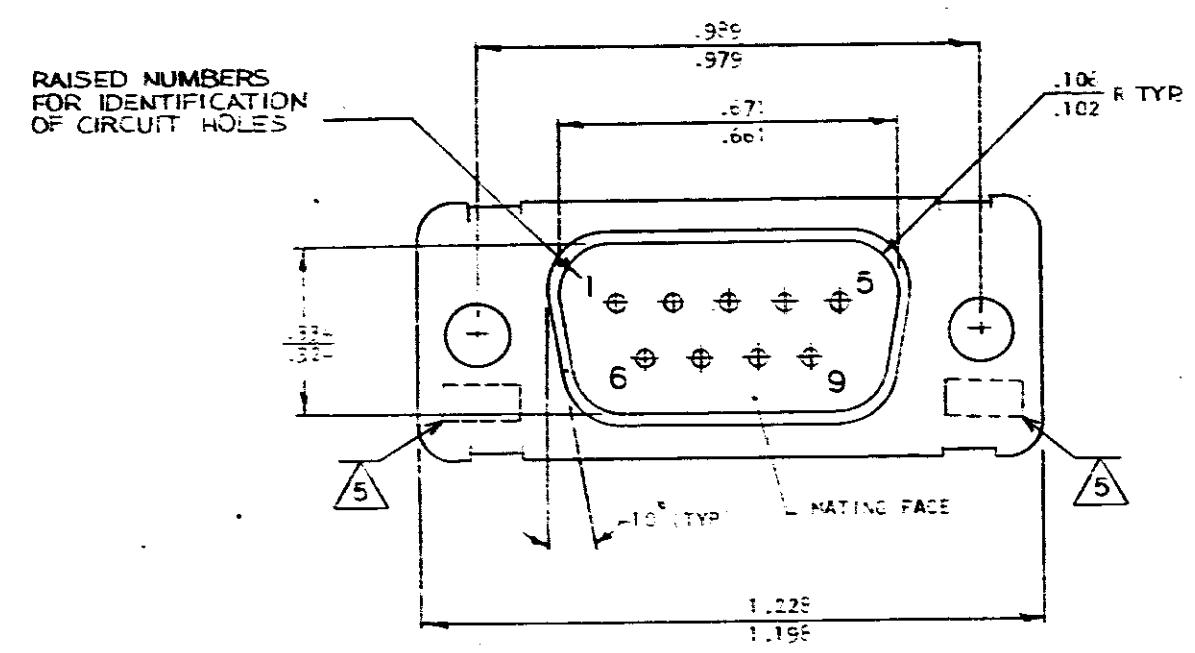


THIS DRAWING IS UNPUBLISHED. RELEASED FOR PUBLICATION. 19
 COPYRIGHT 19 BY AMP INCORPORATED, HARRISBURG, PA. ALL INTERNATIONAL RIGHTS RESERVED. AMP PRODUCTS MAY BE COVERED BY U.S. AND FOREIGN PATENTS AND/OR PATENTS PENDING.

REVISIONS					
P	F	ZONE	DESCRIPTION	DATE	APPROVED
		0	RELEASED	5-9-83	[Signature]
✓	✓	A	REV PER ECN K-508	5-2-83	[Signature]
✓	✓	B	REV PER ECN R-2668	5-20-87	[Signature]
✓	✓	C	REV PER DF-1034	M.C. 12-14-89	[Signature]
✓	✓	D	REV PER DF-2276 IMPR 09-0430 (10-27-89)	AE	[Signature]
✓	✓	E	OBS-2; DE-9088	C 12-9	FK



- THIS PLUG WILL MATE WITH ANY SIZE 1, 2 POSITION RECEPTACLE IN AMPLIMITE SERIES AND ACCEPTS SIZE 20 PIN CONTACTS EXCEPT AS NOTED.
- MAXIMUM WIRE INSULATION USED WITH THIS PLUG IS .054 DIA.
- Be-Cu RETENTION CLIPS ARE INCLUDED IN INSERT.
- CONN. SUPPLIED WITHOUT CONTACTS; SHOWN FOR ILLUSTRATION ONLY (PER MIL-C-39029B/58-360)

UL/CSA DESIGNATION STAMPED IN THIS AREA.

OBSOLETE	SAME AS -1 EXCEPT FREQ. ELECT. P/N A70323-1201-026 INK STAMPED	211638-7
	SAME AS -1 EXCEPT NO CUSTOMER PART NO. INK STAMPED	211638-4
	SAME AS -1 EXCEPT WITH TRW P/N 2A014-031V-001 INK STAMPED	211638-2
	AS SHOWN WITH HUGHES P/N (1A01-026) INK STAMPED	211638-1

UNLESS OTHERWISE SPECIFIED DIMENSIONS ARE IN INCHES TOLERANCES ON: DECIMALS = ± .005 ANGLES = ± 30'	CONTRACT NO	AMP AMP INCORPORATED Harrisburg, Pa. 17105	
	DR [Signature] 5-6-83	NAME PLUG ASSEMBLY, SPECIAL WITH GROMMET, NON-MAG. SIZE 1, SERIES 109	
	CHKD [Signature] 5-10-83	SIZE	FSCM NO
	APPD [Signature] 5/11/83	D	00779
MATERIAL	DSGN APPR [Signature]	DRAWING NO	211638
SEE CALLOUTS	OTHER APPD	SCALE	SHEET 1 OF 1
FINISH			
SEE CALLOUTS			